

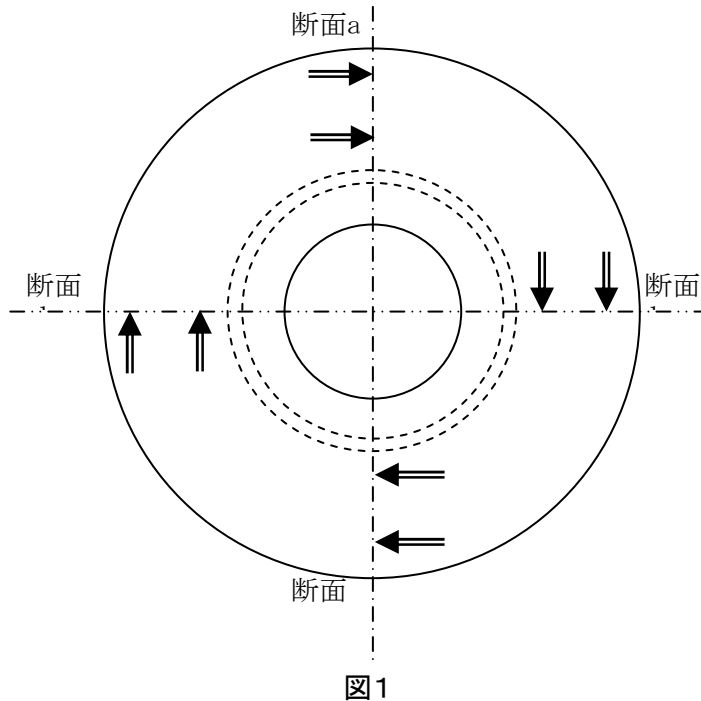
平成22年8月10日
 コミヤマエレクトロン株式会社

パラロウ(BPd-1)ロウ付け試験断面写真

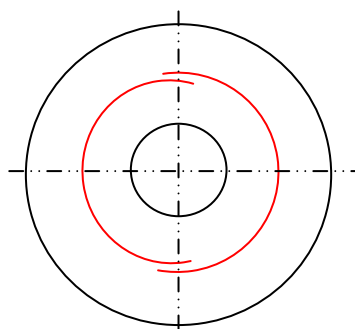
試作部品 1 のパラロウ材によるロウ付け試験を行った際の断面写真を以下にご連絡致します。

1) 切断位置

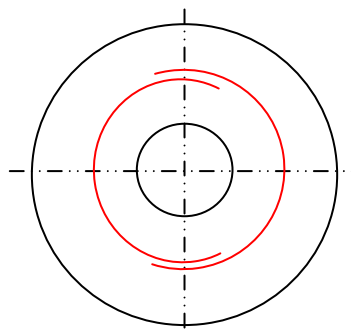
試験体の切断位置を以下、図1に示します。



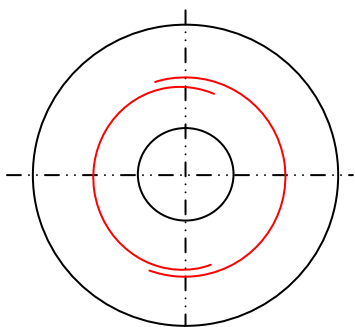
2) ロウ材のセット方法



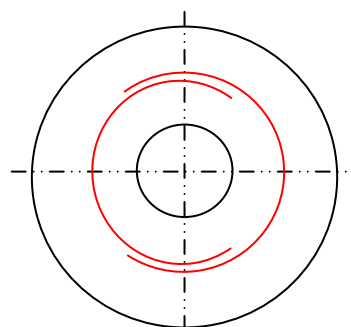
試作部品1 100% 180mm



試作部品2 120% 216mm



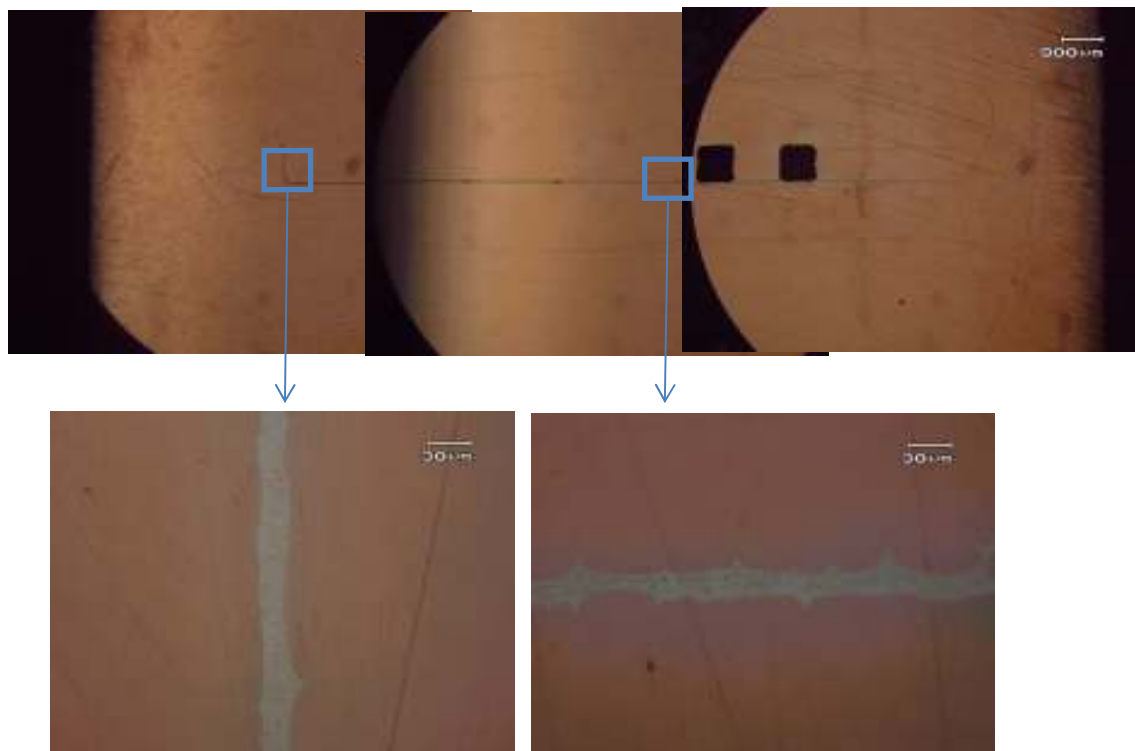
試作部品3 120% 208mm



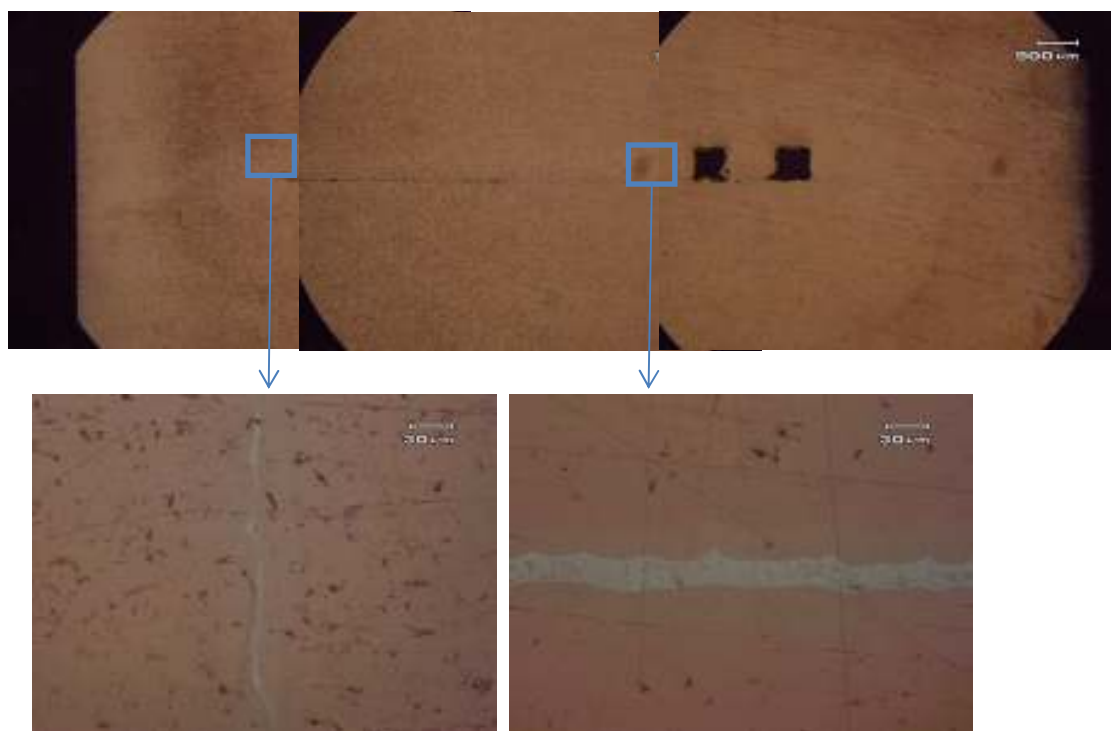
試作部品4 160% 268mm

3) 断面写真

No.1 断面a



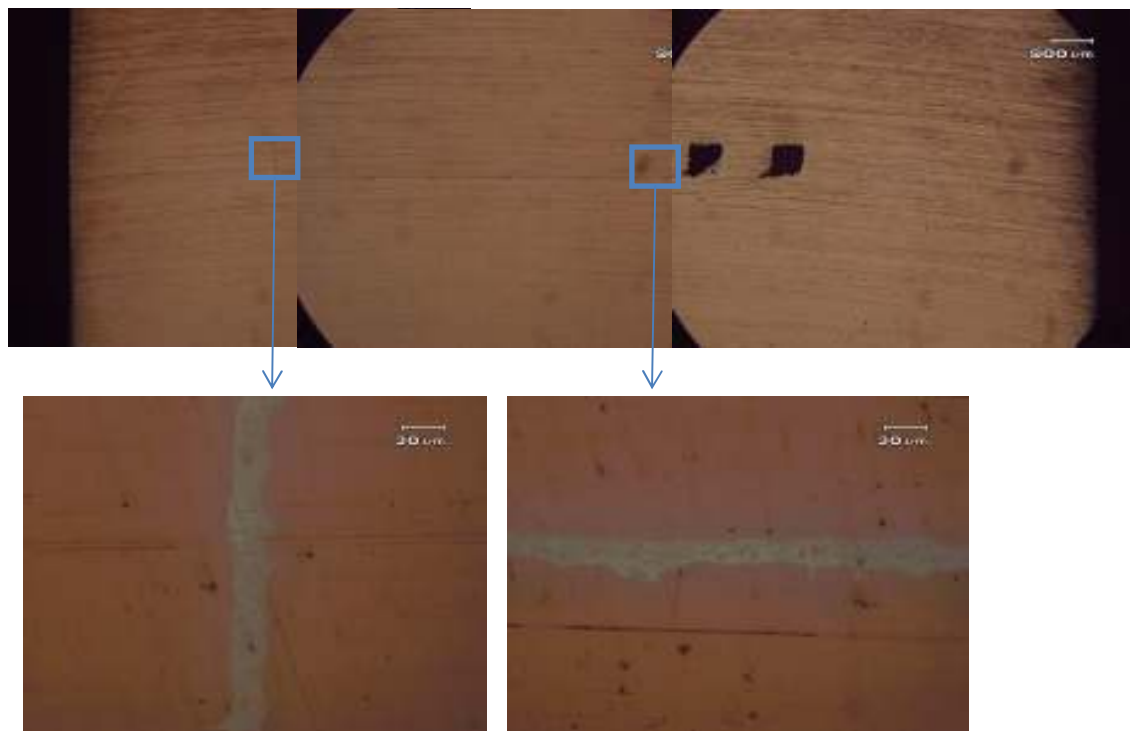
No.1 断面b



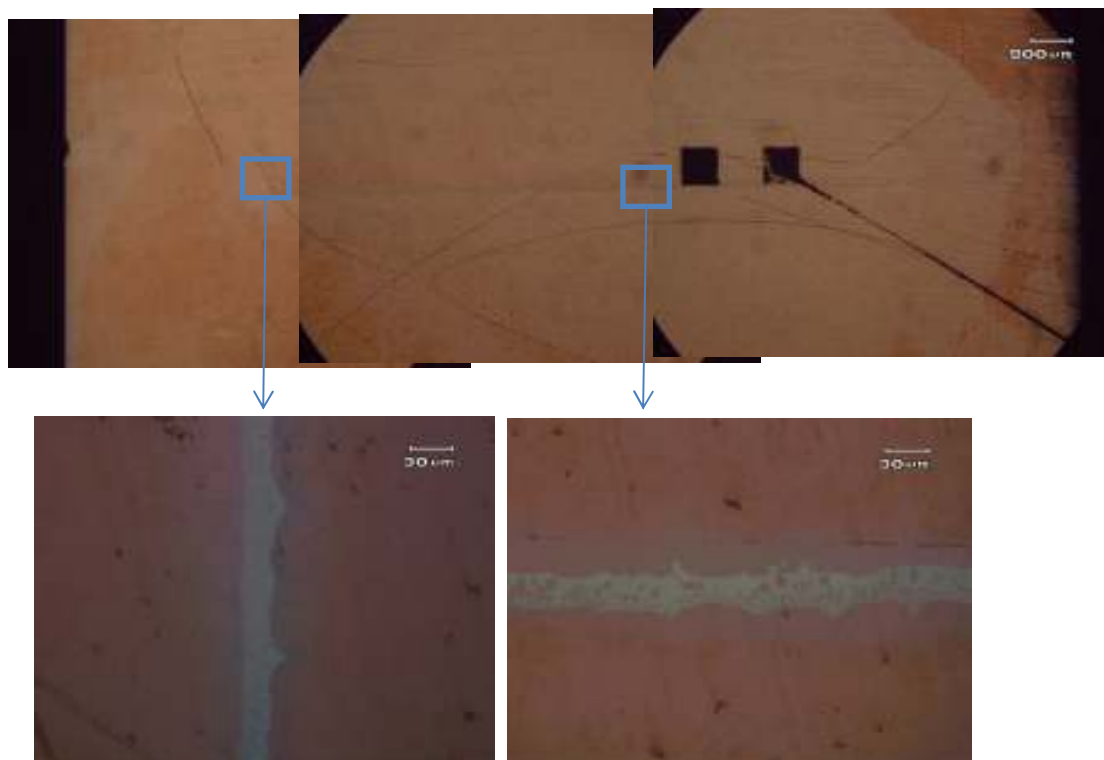
No.1 断面c



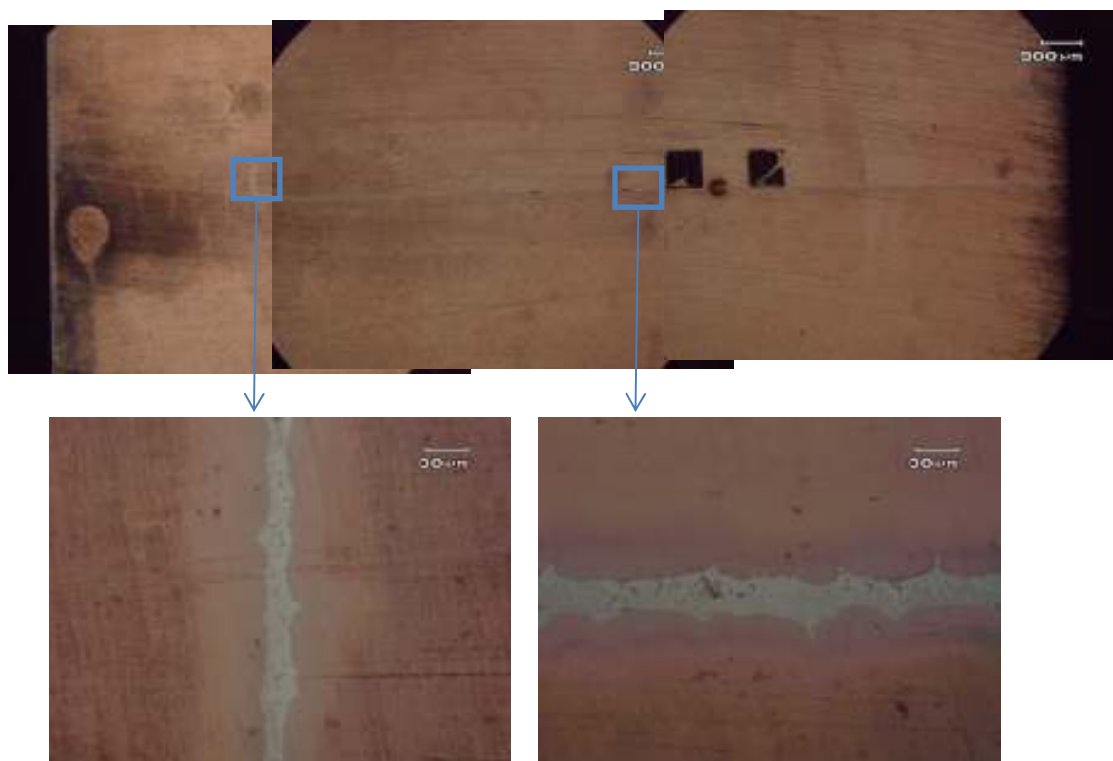
No.1 断面d



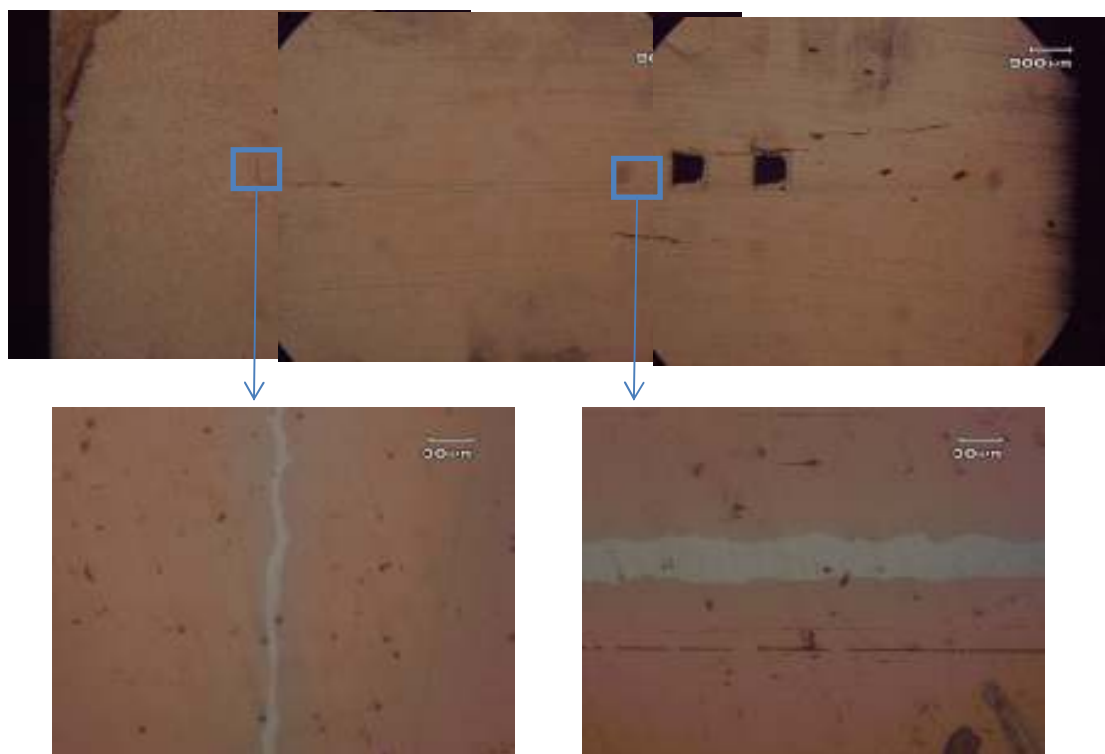
No.2 断面a



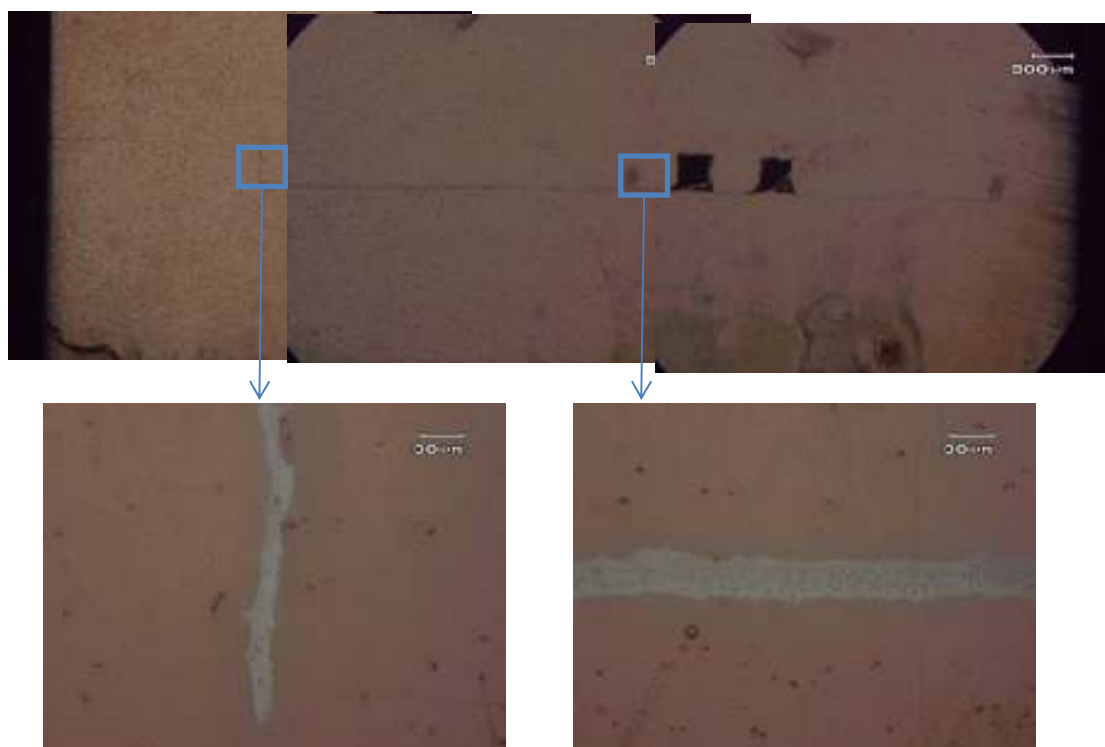
No.2 断面b



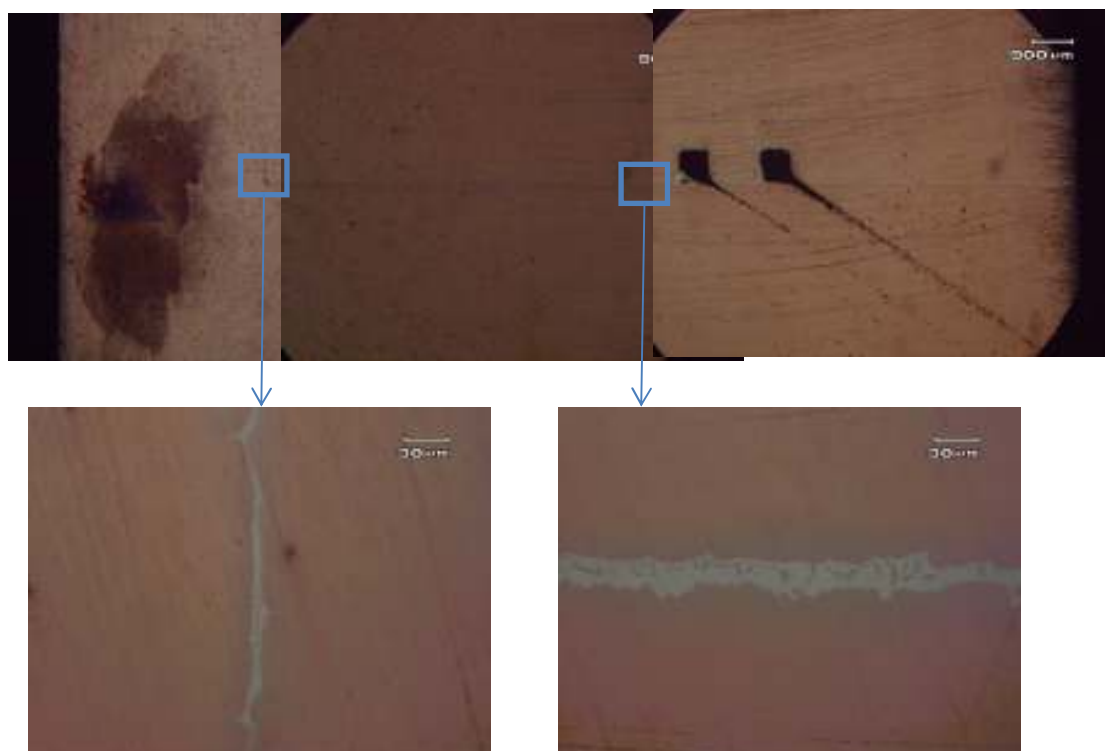
No.2 断面c



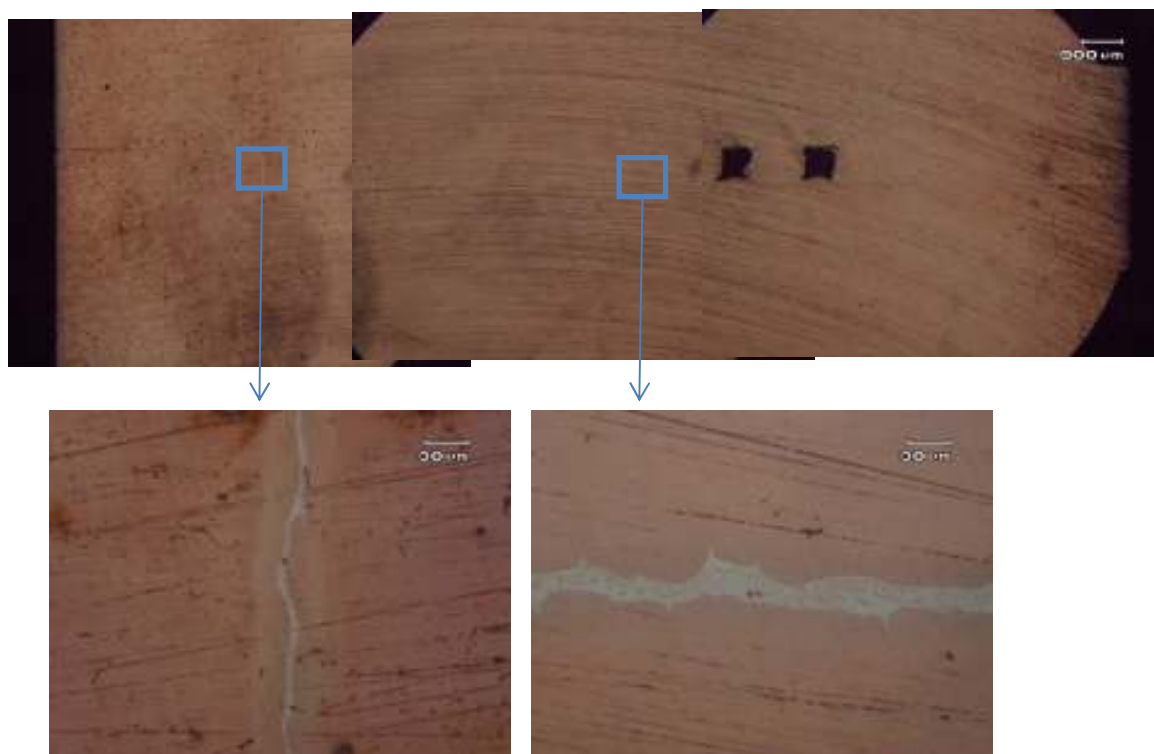
No.2 断面d



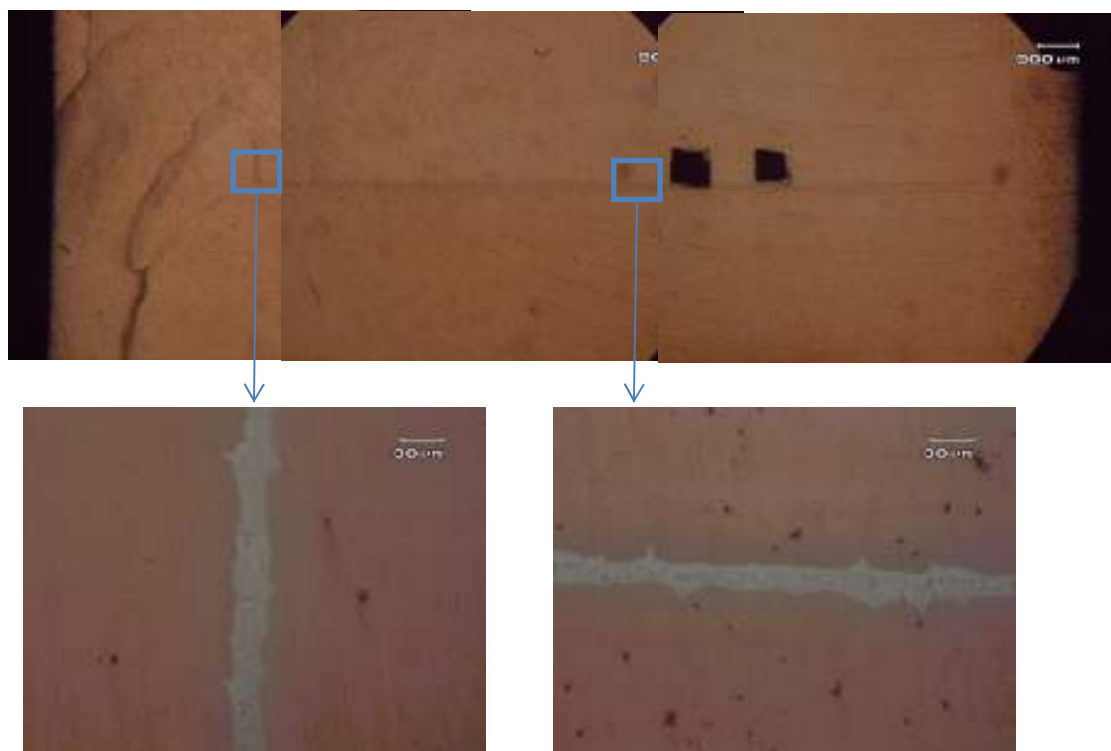
No.4 断面a



No.4 断面b



No.4 断面c



No.4 断面d

